

**TerraTrike®**  
PART OF THE SOLUTION

# *Rambler*



**Assembly Guide  
Pilot's Handbook  
Technical Illustration  
&  
Parts List**

**www.TerraTrike.com - 800.945.9910  
4525 Stauffer Ave SE, Suite A. Kentwood, MI  
49508 USA**

## Table of Contents

Assembly Guide - Pg 1 - 11

Pg 1 - Hubmount/Handle bar Installation

Pg 2 - Rear Wheel/Front Wheel Installation

pg 3 - Brake Installation

Pg 4 - Boom Installation, X-seam setup, Alignment

Pg 7 - Rear Derailleur Hanger Alignment and Installation

Pg 8 - Shifter & Brake Cable Installation & Routing

Pg 9 - Seat Clamp Installation and Chain Installation

Pg 10 - Pedal Installation & Seat Installation

Pg 11 - Reflector Installation & Final Handle Bar Adjustment

Owners Information - Pg 12 - 15

Pg 12 - Welcome!, Unpackaging, Caution/Safety, Riding Tips

Pg 13 - Warranty Information

Pg 14 - Rambler Specific Owners Info - Handle bar Adjustment

Pg 15 - Seating Adjustment, Tire Pressure

Technical Information - Pg 16 - 18

Pg 16 - Rambler Technical Drawing (Exploded), Part Numbers

Pg 17 - Rambler Seat Clamp Drawing (Exploded), Part Numbers

Pg 18 - Parts Lists for Technical Drawings

Pg 19 - X-Seam Settings

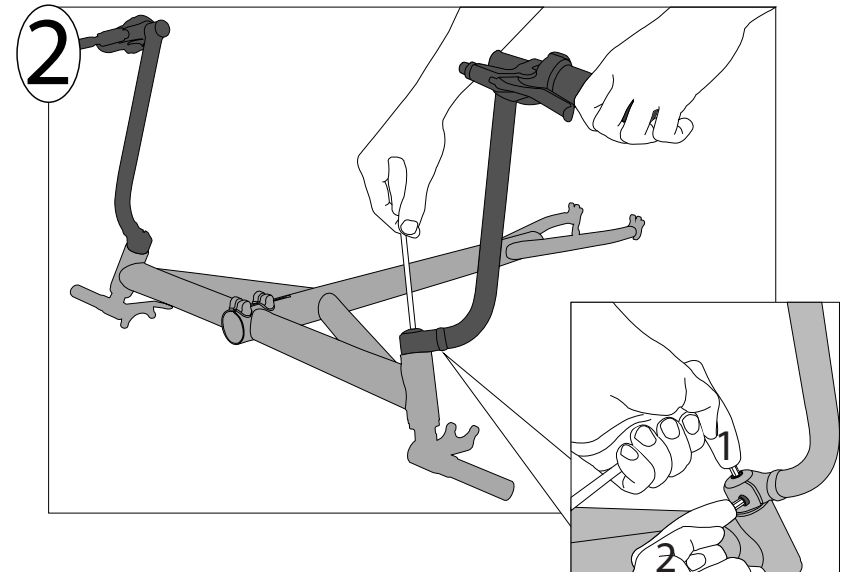
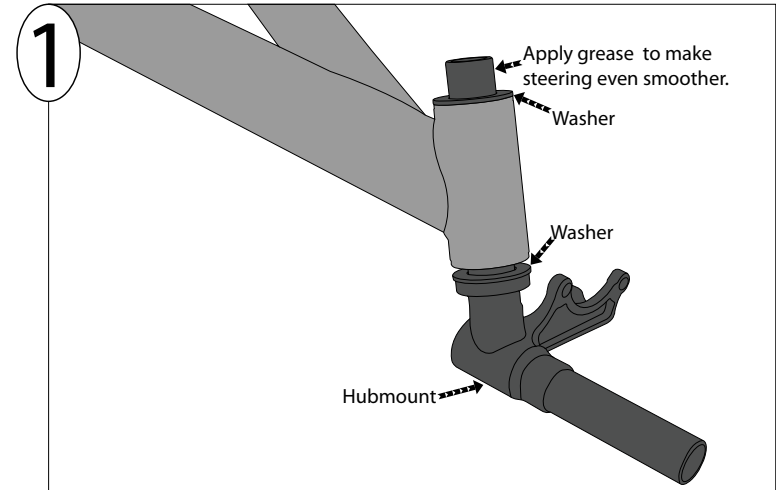
Pg 20 - Notes

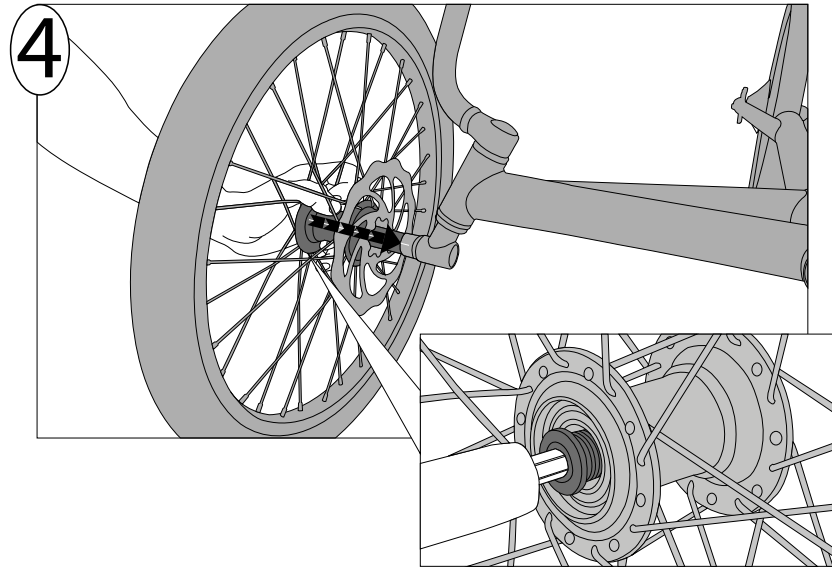
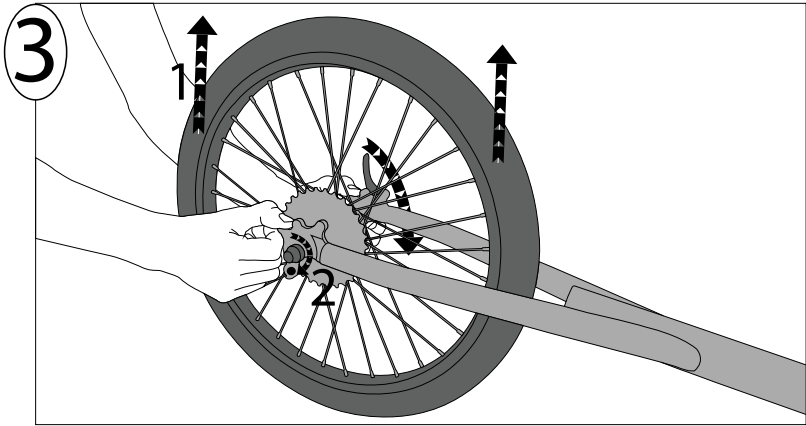
Pg 22 - Company Information

## Assembly Guide

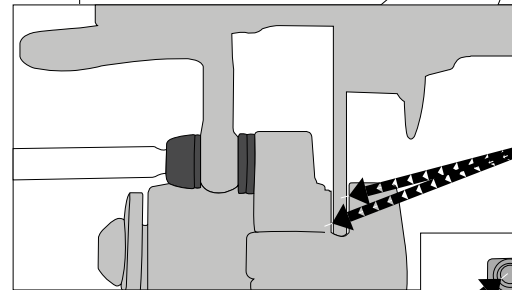
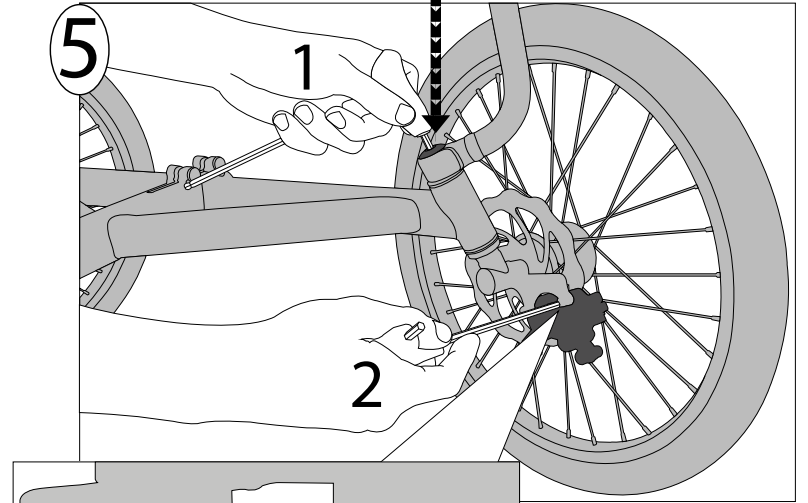
Dark Grey = Installation/Adjustment

PLEASE NOTE: Make sure you're greasing bolts before installing them. Failure to do so can cause "galling" to occur (heat and friction will fuse (weld) the fasteners together). Adjustment will be impossible and not covered under warranty.

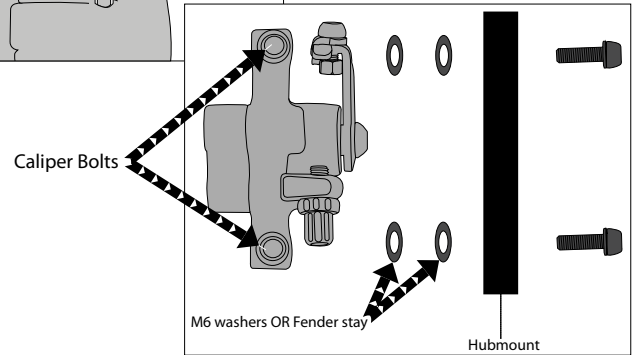


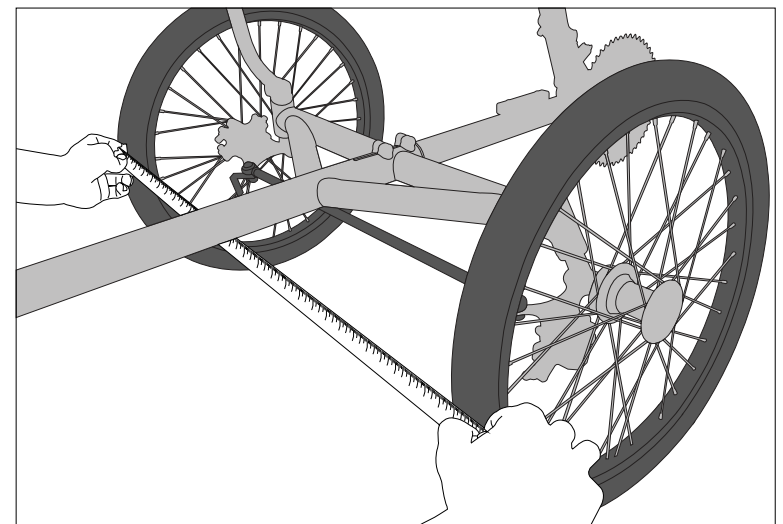
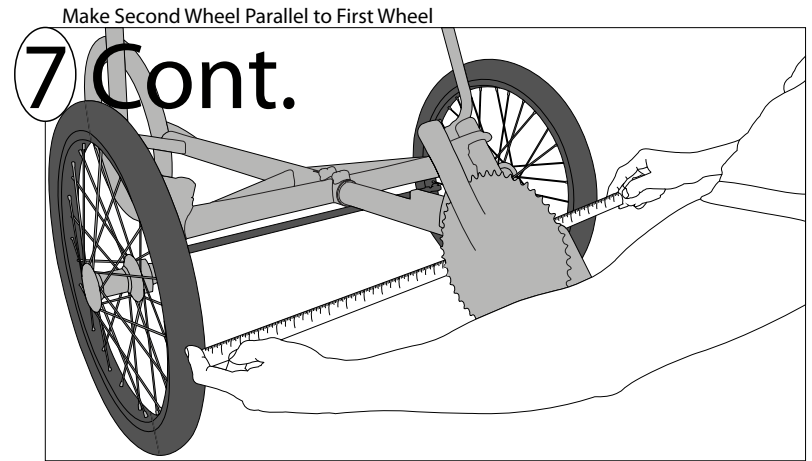
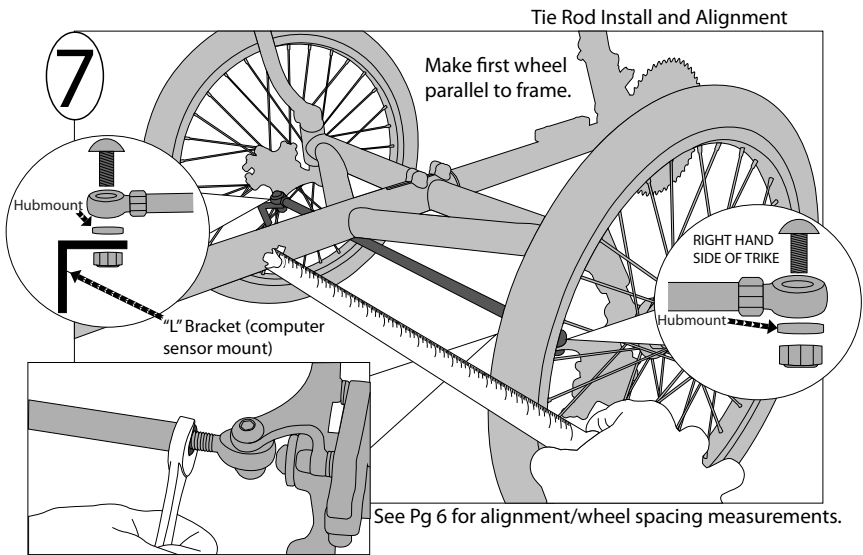
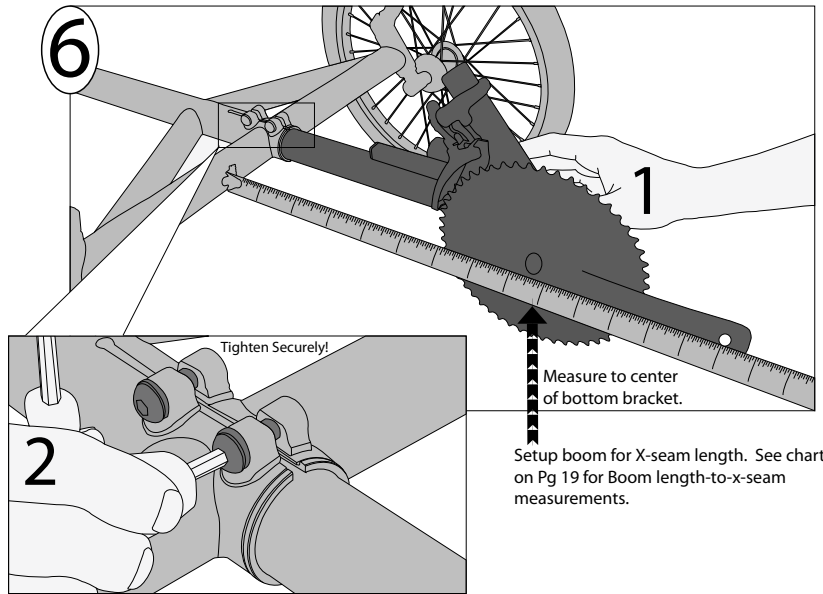


Tighten cap-screw until wheel doesn't move. This makes brake caliper setup easier.  
**Loosen cap screw to desired steering resistance when finished.**



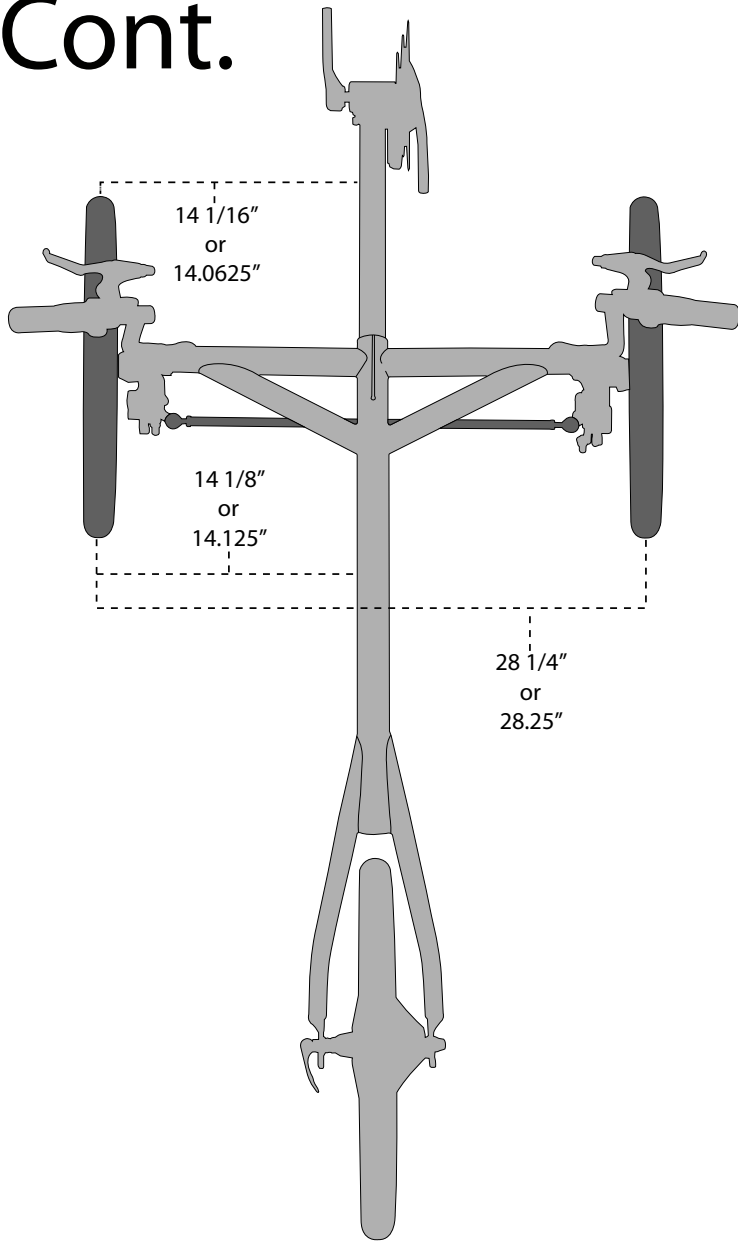
Proper setup: you should see daylight on either side of the rotor with bolt screws tightened down. See below image for bolt location and fastener layout.



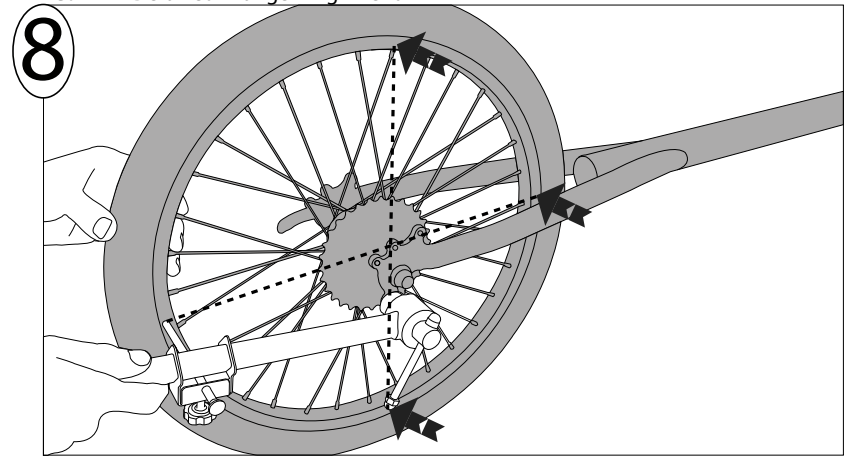


See Next Page for Alignment/wheel spacing measurements

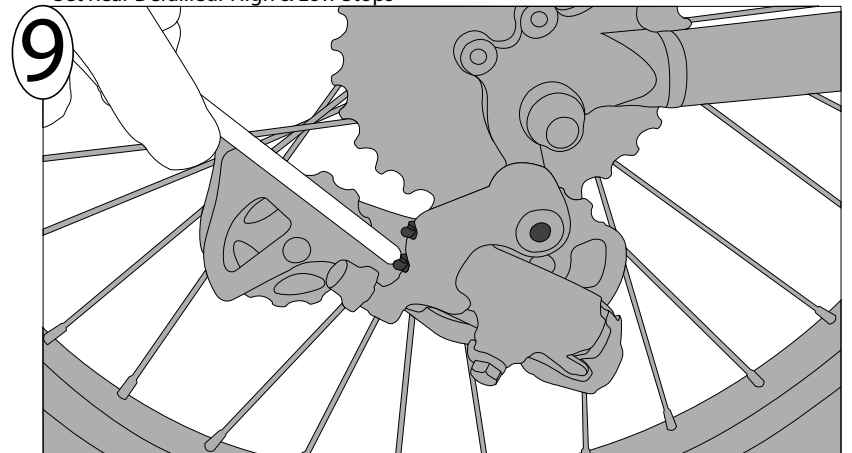
# 7 Cont.



Confirm Derailleur Hanger Alignment

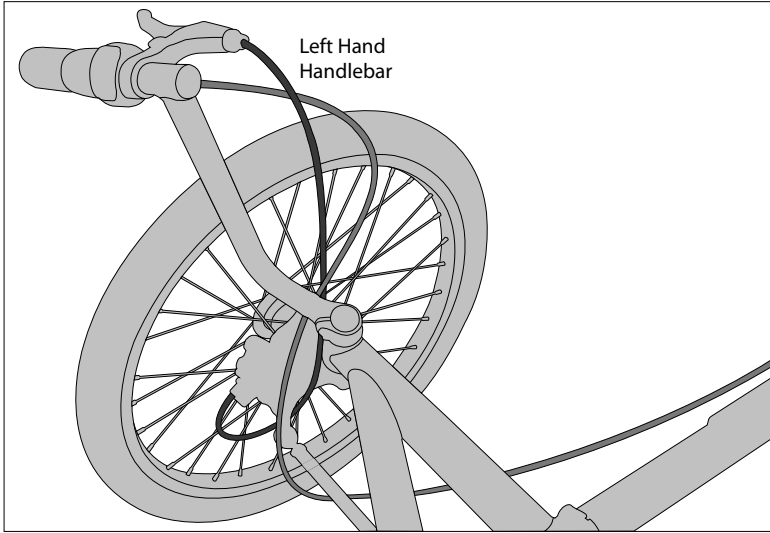
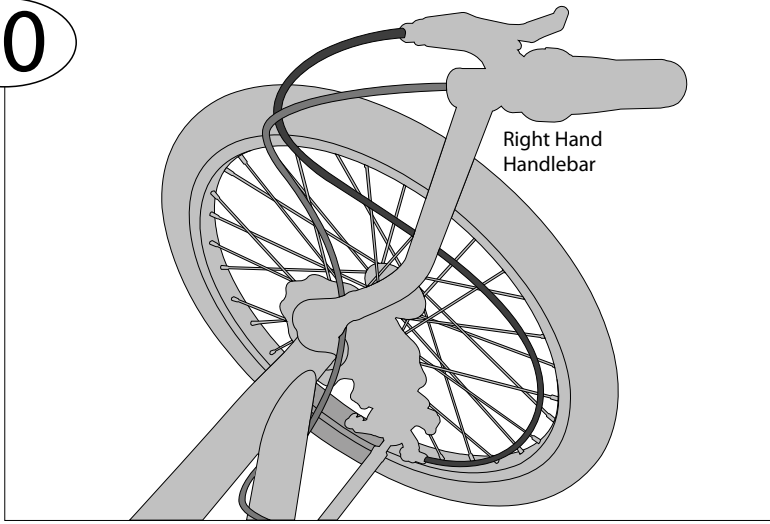


Set Rear Derailleur High & Low Stops

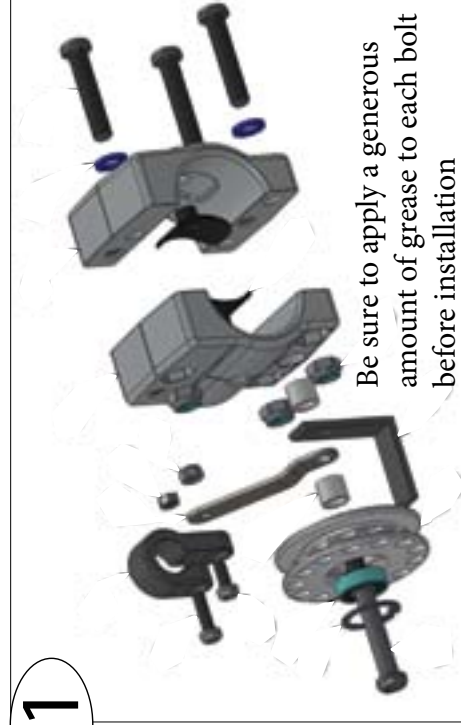


Cable Routing

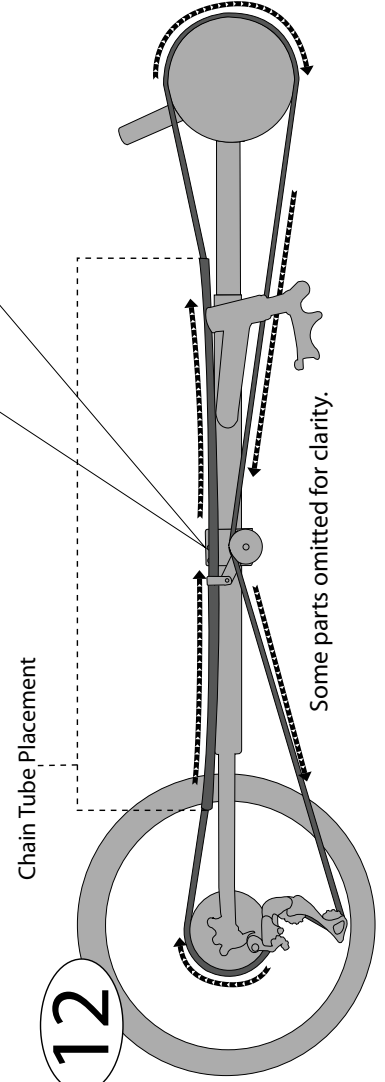
10



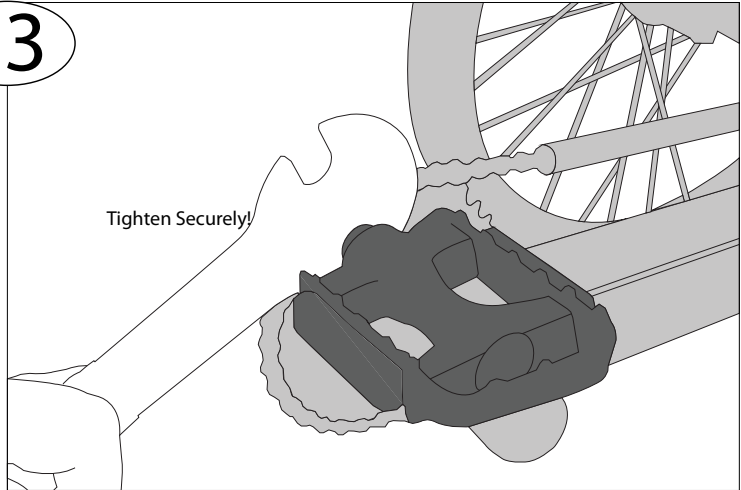
11



12

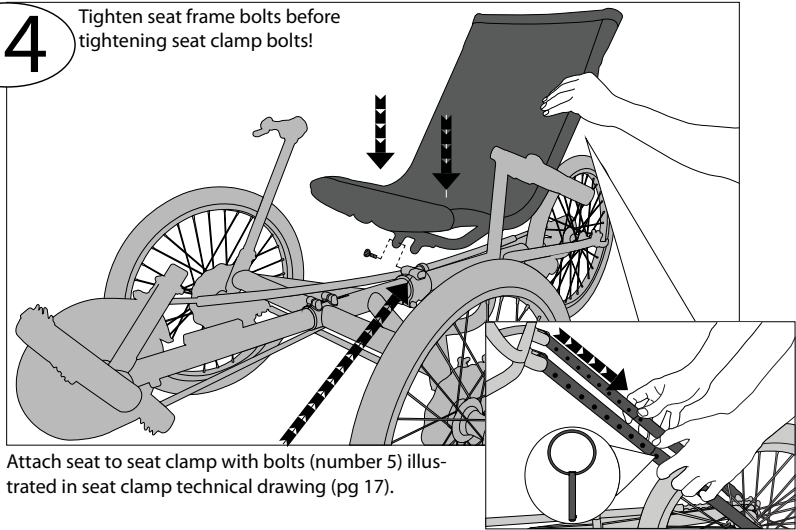


13

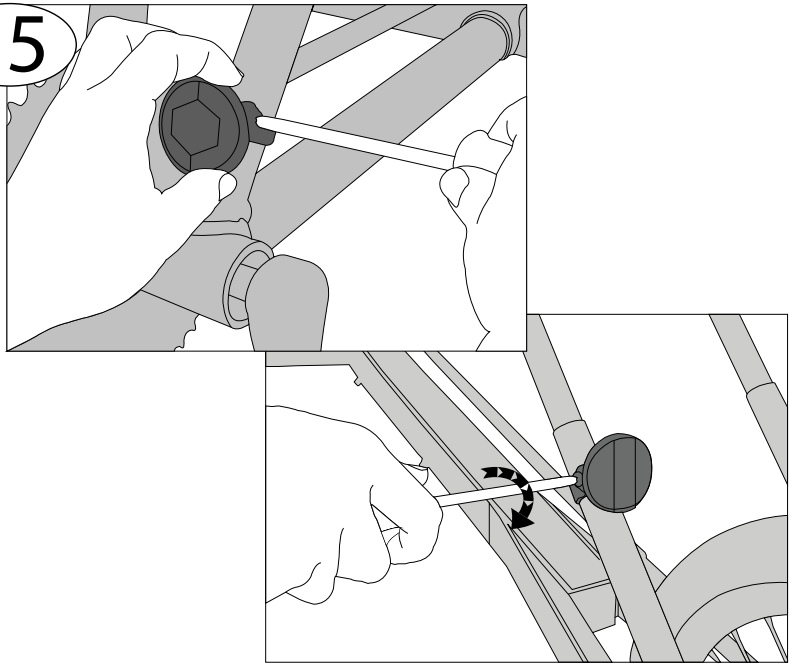


14

Tighten seat frame bolts before tightening seat clamp bolts!



15



16

Handle Bar Adjustment - See Page 14

Welcome to our growing Family!

First Things First...Please read the information below BEFORE you go riding. It discusses everything from unpacking your trike to trike maintenance to riding tips. We want our customers to be safe and enjoy their trikes for years to come. Thank you for supporting our company, dealers and families by choosing TerraTrike.

### Unpacking

When your TerraTrike arrives, carefully unpack the contents and inspect for any damage that may have occurred during shipping. Notify your delivery person of ANY damage on the outside of the box. If anything is amiss, contact the TerraTrike Sales Office immediately at (616) 455-5988. Note: The tires may have little or no air in them. This is our normal shipping procedure to avoid damage from extreme altitude fluctuations.

**It's a good idea to flatten and save all boxes and packing materials. You may need them if you ever need warranty service or want to ship your TerraTrike.**

### Cautions/Safety

**Stop!** Make sure to read and understand this manual completely before riding your TerraTrike. We want to keep you riding safely for endless miles and years to come. So, always follow these safety precautions for each ride:

- Inspect your TerraTrike before each ride. Check the tires for proper pressure and any damage. Ensure that the brakes are functioning at their full capacity.
- Please remember a helmet is your most important piece of safety equipment. Wear one!
- If you ride at night make sure you have a white headlight visible from a distance of at least 500 feet, and a red rear taillight.
- Look behind you! We strongly recommend the use of a rear view mirror. Also make sure to turn your head and look before turning or changing lanes.
- Use caution when cornering. Learn to use safe speeds for negotiating corners and going down hills.
- Lean into turns when cornering at speed. Your TerraTrike can be "rolled" if turned too sharply for a given speed. Rule of thumb: rubber side down. :)
- The disc brakes and rotors will get very hot after braking. DO NOT touch them.
- Keep your feet securely on the pedals to prevent them from getting caught underneath your TerraTrike. We recommend clipless pedals or Power Grip pedal straps.
- Brake evenly using both hands. Your TerraTrike is designed with front brakes only. You will experience brake-steer if you brake only one side.
- Although your TerraTrike is suitable for riding on dirt roads if equipped with more rugged tires, it is not designed for all-terrain, off-road use, or canyoneering.
- The unique look of your TerraTrike will attract much attention, so you're more likely to be seen.
- Be sure you are not obstructed from view by other vehicles. Use of a flag is highly recommended.
- Remember, your first line of defense is always your own common sense. Ride as if you are invisible to motorists.
- Your TerraTrike is strong enough for most riding conditions. That is not a license to ride in a hazardous or abusive manner! Anyone can damage their TerraTrike if they try hard enough. Use common sense.
- Take care of yourself. We like our customers, and we want to keep them around.

### Riding Tips

Shifting: Simply twist the shifter up or down to find the desired gear. Sturmey Archer hubs should be shifted when you ARE NOT pedalling. External drive trains (derailleur systems) require pedaling while shifting.

•**Steering:** All of the steering parts tend to settle in after the first 100 miles or so. This may require some tightening of nuts and bolts.

•**Cleaning:** Your TerraTrike will operate for years to come if you keep it regularly cleaned and lubed! Water and soap won't hurt your TerraTrike, provided you dry and lubricate right after cleaning. If you need to wash the seat mesh, remove it from the seat frame, wash it in the gentle cycle and let it air dry. If you ride in inclement weather, immediately clean and lube your TerraTrike after your ride. **Road salt, over time, will cause significant damage to your TerraTrike. Clean it off immediately!** Likewise, salty air will corrode your TerraTrike. It's a good idea to wax the frame occasionally with a good quality car wax. We do use stainless steel nuts and bolts.

### TerraTrike Lifetime Warranty

#### Lifetime Warranty

WizWheelz warrants to the original owner that all its trike frames, seat frames, and steering components are free of defective materials and workmanship subject to the limitations contained in this warranty. This warranty is limited to the lifetime of the original owner and is nontransferable. The Edge model carries a 3 year warranty. Warranty is conditioned upon the trike being purchased through and assembled by WizWheelz or an authorized WizWheelz dealer, operated under normal conditions, and maintained properly. Warranty does not apply to paint/finish or components attached to the frame. Attached components are subject to the warranty, if any, of their original manufacturer. Warranty claims must be presented to the place where the product was purchased whether that is an authorized WizWheelz dealer or the WizWheelz factory. Proof of purchase must accompany all requests for warranty coverage. WizWheelz reserves the sole discretion to repair or replace any parts covered by this warranty. Replacement parts may be a newer version than those originally purchased. Original owner shall be responsible for all labor, shipping, and travel costs related to repair or replacement of warranted parts. This warranty does not apply to normal wear and tear, or any defects, malfunctions, or failures that result from abuse, neglect, improper assembly, improper maintenance, overloading past specified load limit, alterations (i.e. cutting, spreading, drilling, welding, etc.), collisions, accidents, or misuse.

WizWheelz shall not be liable for any special, indirect consequential, incidental or other similar damages suffered by the purchaser or any third party, including, without limitation, damages for loss of profits or business or damages resulting from use or performance of the product, whether in contract or in tort, even if WizWheelz or its authorized representative has been advised of the possibility of such damages and WizWheelz shall not be liable for any expenses, claims, or suits arising out of or relating to any of the foregoing.

## Rambler Owners Information

### Handlebar Adjustment

\*\*\*HANDLEBAR ADJUSTMENT VIDEO AVAILABLE ONLINE - <http://www.terratrike.com/manuals.php>  
Your Rambler handlebars are adjustable in two different ways:

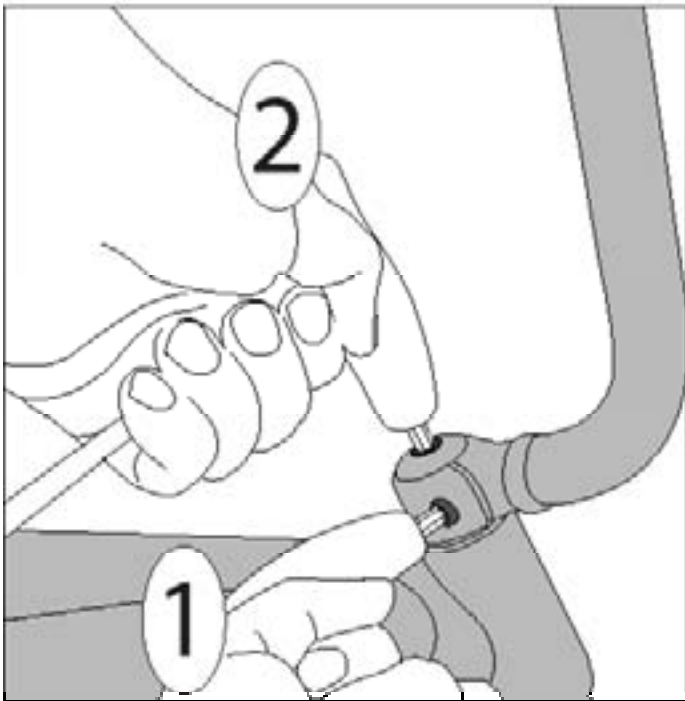
- 1) The stiffness/ease of steering can be adjusted - you can make your Rambler harder or easier to steer by adjusting your "Top Cap Bolts" (number 22 in the technical illustration on pg 17).
- 2) They can rotate out and away from the rider - this gains a slightly wider riding clearance for wider people. This is also ideal for individuals with longer arms and/or broad shoulders.

If you decide to adjust your Rambler's handlebars, follow the below steps:

### Top Cap Bolt Adjustment (Tighten or Loosen Steering "feel"):

- 1) Loosen the clamping bolt that secures your handlebar to the steering tube that runs through the frame.
  - 2) Carefully loosen the cap screw bolt. This is what controls the stiffness of the steering.
- \*\*\*DON'T LOOSEN THE CAP SCREW BOLT TOO MUCH. You DON'T want your handle bars to feel wobbly!\*\*\*

Retighten the clamping screw to secure your handle bar, and test the feel.



### Seating Position Adjustment

Your Rambler's seat is adjustable on two different planes: incline/recline angle of the seat back and fore/aft positions at the base.

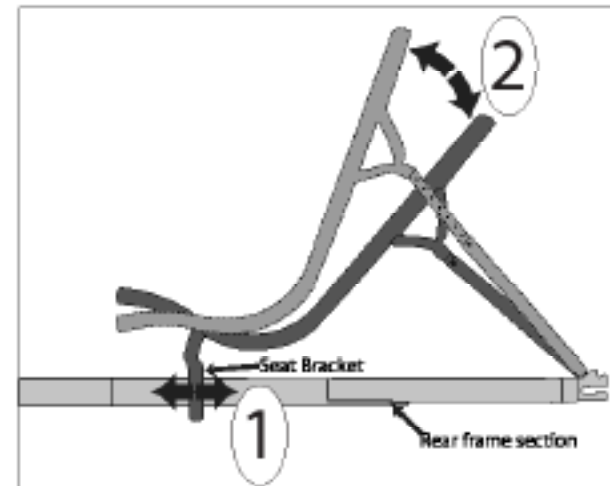
Your seating position can adjust anywhere from 35-70 degrees depending on where the seat bracket is located on the frame.

#### 1) Fore/Aft Seat Position-

To move the base of your seat, loosen the two lower clamping bolts and the idler clamp bolt, move the seat, and tighten the bolts. Your Rambler seat has approximately 9.5" of total fore/aft movement on the main frame. MAKE SURE THAT THE SEAT IS CLAMPED SECURELY

#### 2) Incline/Recline Position-

To adjust the incline/recline position (sitting up-right or laying back), pull the "seat stay pins" (number 5 in technical illustration) from the "seat stays" (number 4 in the technical illustration). You can now adjust your angle of recline (seat back angle). When you have a seating position you feel comfortable with, align the holes in the "seat stays" and reinstall your "seat stay pins" \*\*\*MAKE SURE THE HOLES IN THE SEAT STAYS LINE-UP WHEN YOU REINSTALL YOUR SEAT STAY PINS\*\*\*

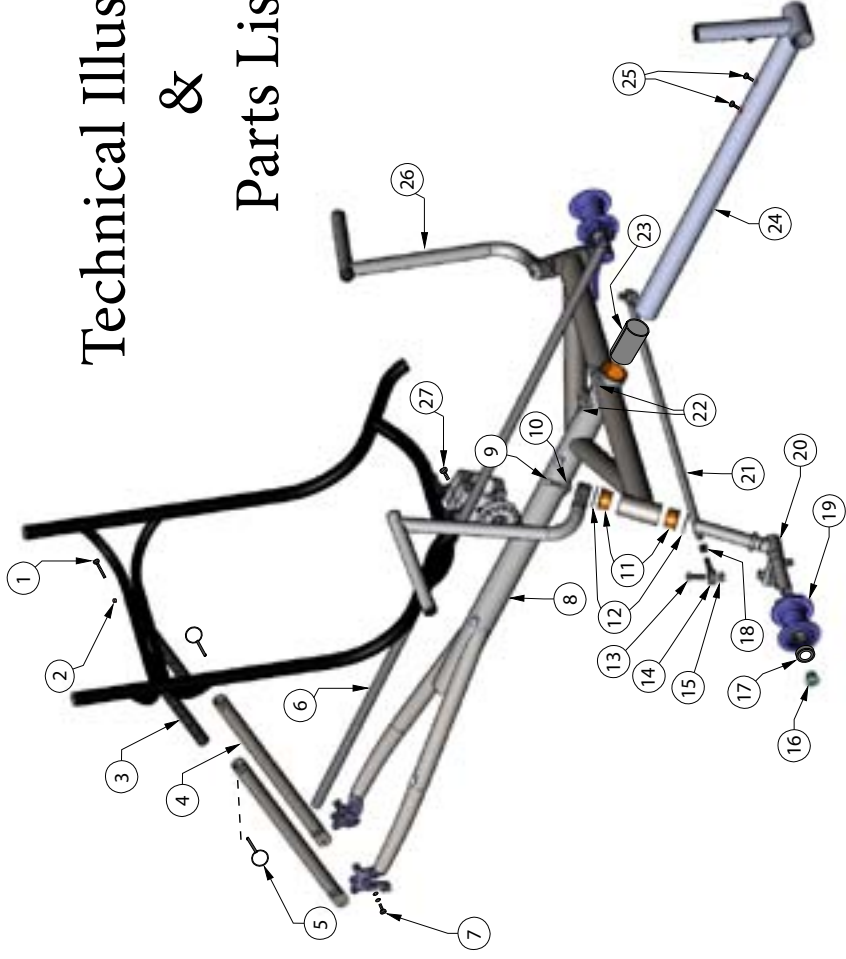


### Tire Pressure

Tire pressure is indicated on the side-wall of of each tire.

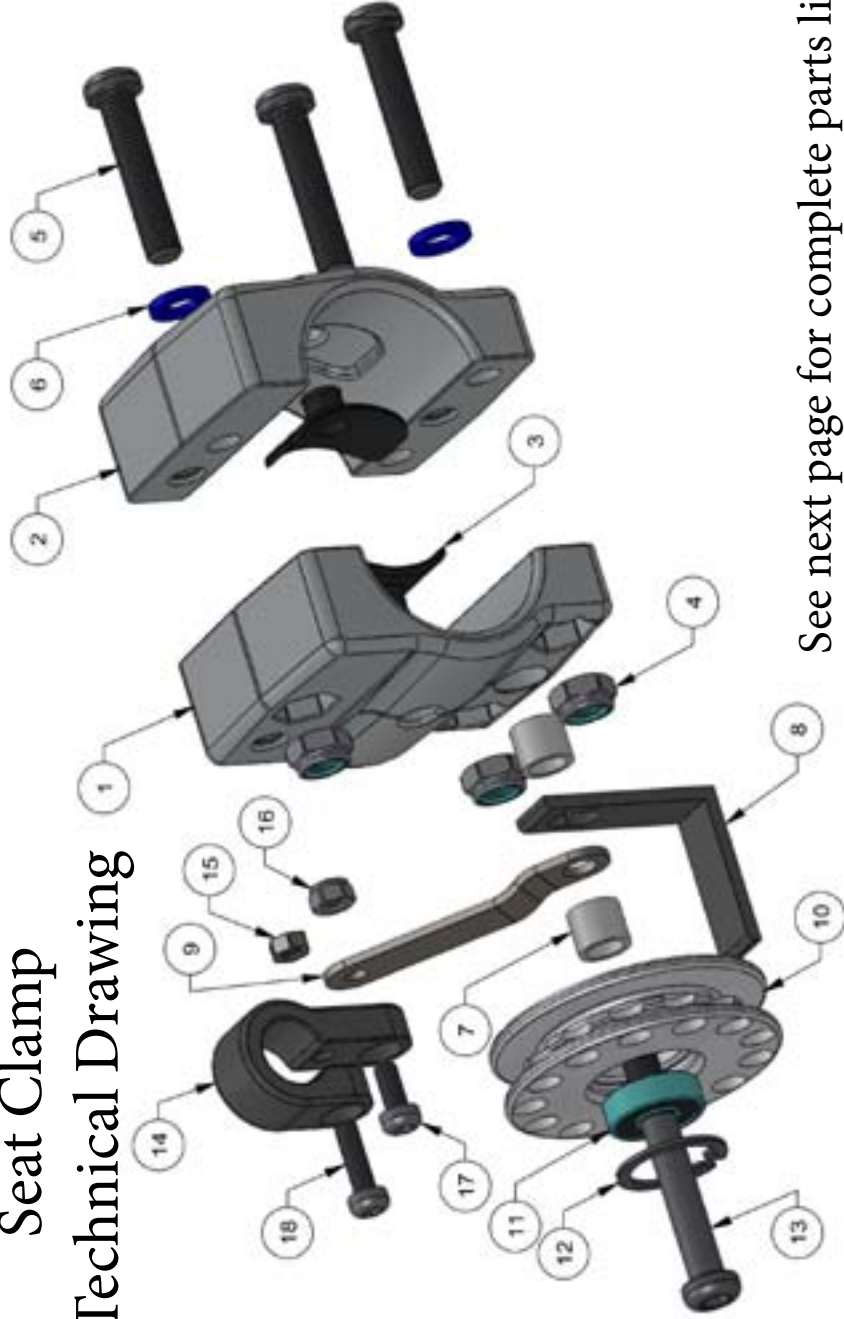
\*\*\*TIRE PRESSURE SHOULD BE CHECKED BEFORE EACH RIDE.\*\*

# Technical Illustration & Parts List



## Seat Clamp

### Technical Drawing

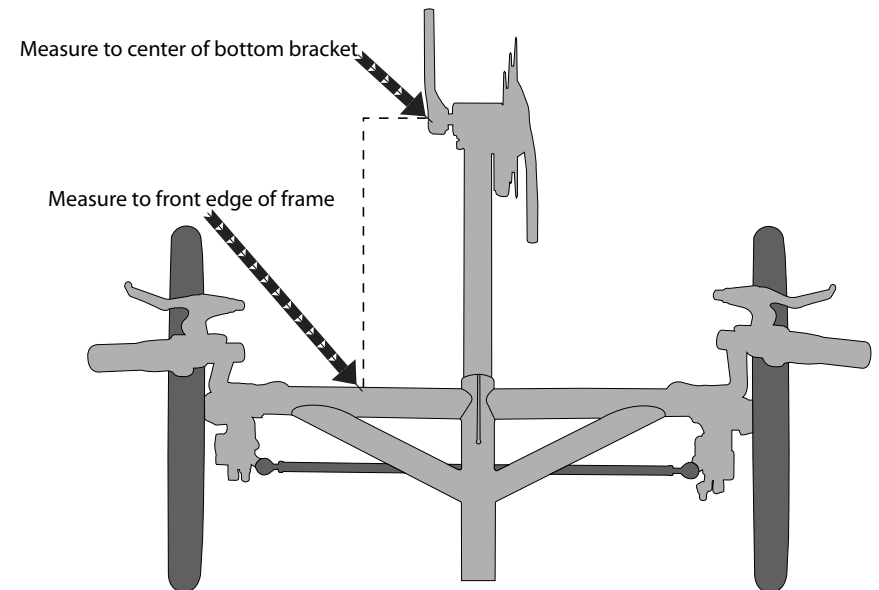


See next page for complete parts lists

Item	Rambler Part Descriptions	Quantity
1	M5x25 Bolt - Attach seat stays to seat frame	2
2	M5 Lock Nut - Attach seat stays to seat frame	2
3	Upper Seat Stays	2
4	Lower Seat Stays	2
5	Seat Stay Pin	2
6	Chain Tube (36 Inches Long)	1
7	M5x12 Bolt w/2 M5 Flat Washers (2 bolts, 4 washers)	2/4
8	Rambler Frame	1
9	Cap Screw	2
10	Handle Bar Cap	1
11	Steering Bushings (20mm)	2
12	Steering Flat Washers	2
13	M8x30 Bolt	2
14	Tie Rod End (1 left hand, 1 right hand)	1 ea
15	M8 Lock-nut	2
16	Axle Bolt (socket plug)	2
17	Wheel/hub bearing (6804)	4
18	M8 Hex Nut	2
19	Wheel Hub	2
20	Hubmount	2
21	Tie Rod	1
22	M8x30 Bolt	2
23	Boom Sleeve	1
24	Boom	1
25	M5x12 Button head bolt	2
26	Handle Bar	2
27	M8x21 Pan Head Bolt	2

Item	Rambler Seat Clamp Part Descriptions	Quantity
1	Seat Clamp	1
2	Seat Clamp	1
3	Seat Clamp Pad	2
4	M8 Nut with Nylon Insert	3
5	M8x40mm bolt	3
6	M8 Flat Washer	3
7	Idler Spacer	2
8	13T Chain Guard	1
9	Chain Tube Bracket	1
10	13T Idler	1
11	Idler Wheel Bearing (6804)	1
12	Idler Bearing Snap Ring	1
13	M8x65mm Bolt	1
14	Chain Tube Bracket	1
15	M5 Flat Nut	1
16	M5 Nut with Nylon Insert	1
17	M5x12mm Screw	1
18	M5x18mm Screw	1

## X-Seam Settings



### 8 SPEED RAMBLER

Suggested Size Ranges	X-Seam Range	Boom Length	Chain Length
Short	33" - 41"	11"	120"
Medium	36" - 45"	14.5"	128"
Long	39" - 47"	18"	134"

### Base, Elite, Pro RAMBLER

Suggested Size Ranges	X-Seam Range	Boom Length	Chain Length
Short	33" - 41"	11"	129"
Medium	36" - 45"	14.5"	137"
Long	39" - 47"	18"	145"



COMPANY INFORMATION:

TerraTrike (WizWheelz Inc.)  
4525 Stauffer Ave SE, Suite A.  
Kentwood, MI 49508  
USA

Email:

sales@terratrike.com - for Ordering & Customer Service  
tech@terratrike.com - for Technical Assistance  
shipping@terratrike.com - for Shipping Inquiries

Phone:

1-800-945-9910 or 1-616-455-5988

Fax:

1-616-455-6058

RESOURCES:

- TerraTrike Forum - <http://www.terratrike.com/forum/>
  - TerraTrike Blog - <http://terratrike.com/blog/>
  - TerraTrike Facebook Page - <http://www.facebook.com/terratrike>
  - TerraTrike Twitter Page - <http://www.twitter.com/terratrike>
  - TerraTrike Youtube Channel - <http://www.youtube.com/wizwheelzterratrike>
  - TerraTrike Owners Group -<http://sports.groups.yahoo.com/group/wwog/>
  - Bentrider Online (BROL) - <http://www.bentrideronline.com/>
  - Recumbent Journal - <http://www.recumbentjournal.com/>
- \*Remember to subscribe!

**WARRANTY REGISTRATION:**

**Register your trike online at: <http://www.terratrike.com/register.php>**  
**or**  
**Call us to register your trike - 1-800-945-9910**