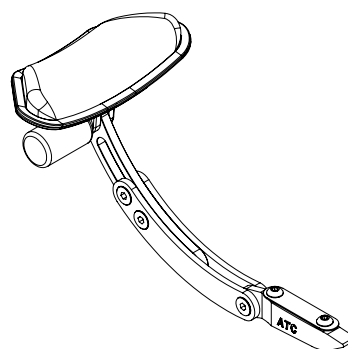
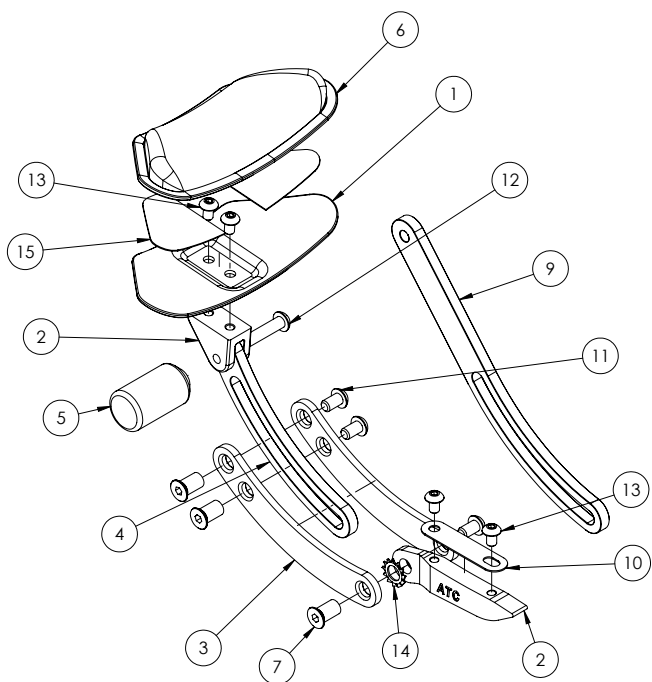


**Tools Needed:** 3mm Allen Wrench, 4mm Allen Wrench.

**Parts Included:**

ITEM NO.	PART NUMBER	DESCRIPTION	QTY.
1	TT000885	Sport Touring Headrest Plate	1
2	TT000887	Sport Touring Headrest Plate Mount	1
3	TT000888	Sport Touring Headrest Female Arm	2
4	TT000889	Sport Touring Headrest Male Arm	1
5	TT000890	Sport Touring Headrest Light Mount	1
6	TT000892	Sport Touring Headrest Pad	1
7	TT000894	Hinge Nut M6x14L	3
2	TT000902	Sport Touring Headrest Mount ATC	1
9	TT000903	Sport Touring Headrest Male Arm XL	1
10	TT000904	ATC Headrest Mount Washer	1
11	WH000021	M6x1.0 x 10mmL SBHCS SS	3
12	WH000022	M6x1.0 x 25mmL SBHCS SS	1
13	WH000023	M5x0.8 x 8mmL SBHCS SS	4
14	WH000026	M8 SS External-Tooth Lock Washer	2
15	Curved	Sport Touring Headrest Velcro	1



### Assembly Instructions:

Install ATC Headrest Mount Washer (10) and Sport Touring Headrest Plate Mount (2) on seat using the M5x8 bolts (13). Head rest angle can be adjusted via bolts highlighted in red. Head rest height can be adjusted via bolts highlighted in blue.

