

TerraTrike Boost Kit with Bosch Active Line Plus Dealer Assembly Manual

☐ 20" Front Wheel ☐ 24" Front Wheel

Serial Number: _____

Ensure Boost Kit serial number (located on the inside of the boom tube) matches the order and the specifications of the trike it is to be mounted on.



Warning: Failure to match Boost Kit and the trike specifications it is programmed for could result in an error code, will cause the Boost Kit to not operate properly, and will void the warranty for the Boost Kit.

PLEASE NOTE

Perform the following before installing the Bosch Boost Kit:

- Remove pedals from stock boom.**
- Detach shift cable from front derailleur.**
- Remove left hand shift assembly.**
- Break chain.**
- Remove stock boom.**

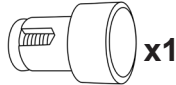
Boost Kit Parts:

Cable Guide



x1

Speed Sensor
Magnet



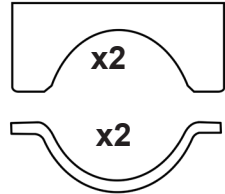
x1

Battery Lock
Key



x2

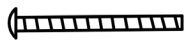
Clamp



x2

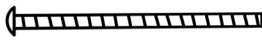
x2

M5x50mm



x4

M5x70mm



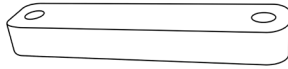
x4

M5 Nyloc
Nut



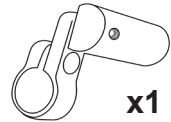
x4

Spacer



x4

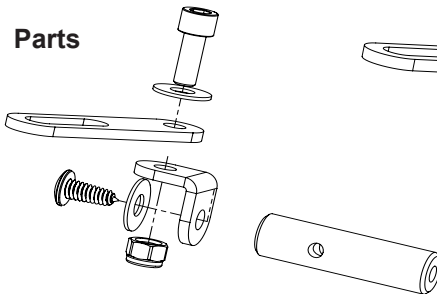
Display Mount



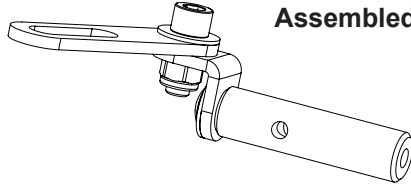
x1

Computer Sensor Bracket

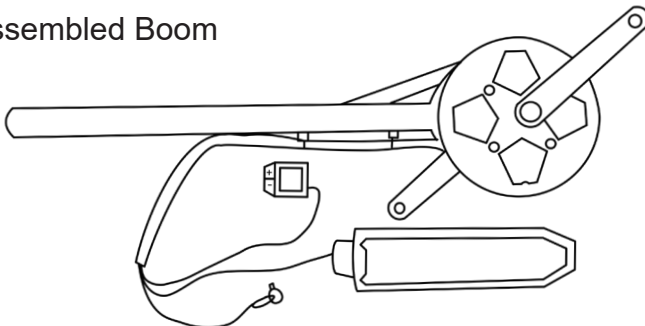
Parts



Assembled

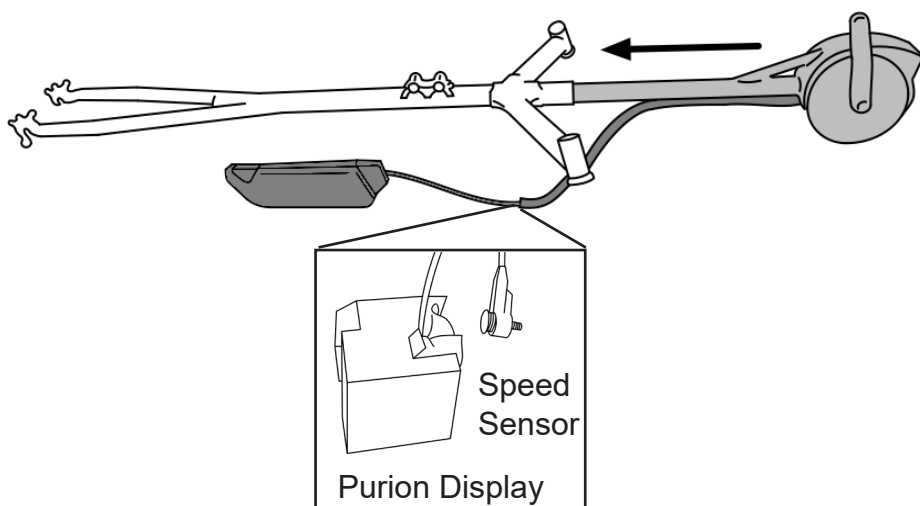


Preassembled Boom



1

Using caution to not stress wires, insert boom to desired length and snug boom pinch bolts to secure boom.



2

Being careful not to change the alignment, disconnect the tie-rod on one side.

3

Mount the battery plate to the frame using the hardware and spacers specified below.

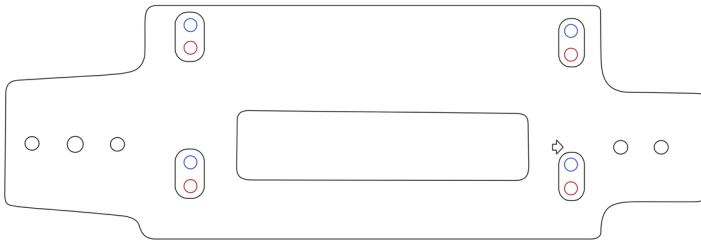
Please note the shift cable may need to be rerouted behind the bolts of the mounting plate.

Hardware Requirements

Rambler/Maverick/Rogue/GTS: No spacers, use M5x50 bolts

Gran Turismo/Traveler: 2 spacers per clamp, use M5x70 bolts

Torque M5x50 and M5x70 hardware to 3-4Nm.

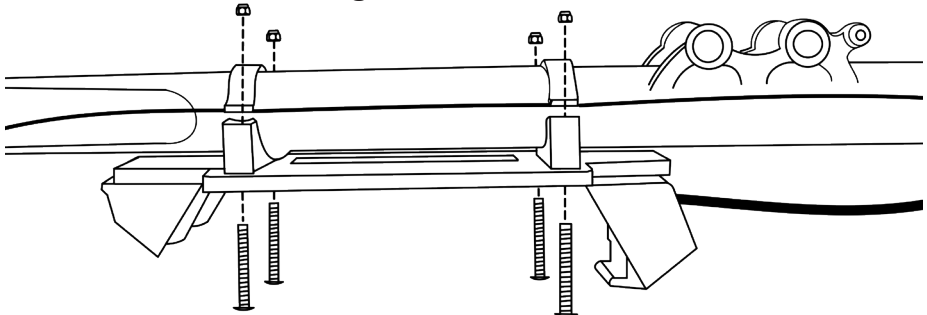


Use **blue** position for Rambler, Maverick, Rogue, GT, and GTS

Use **red** position for Traveler

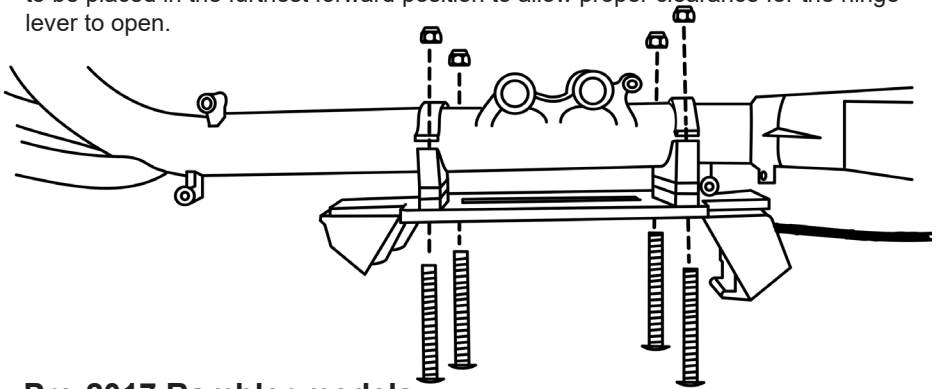
Frame placement

Rambler/Maverick/Rogue



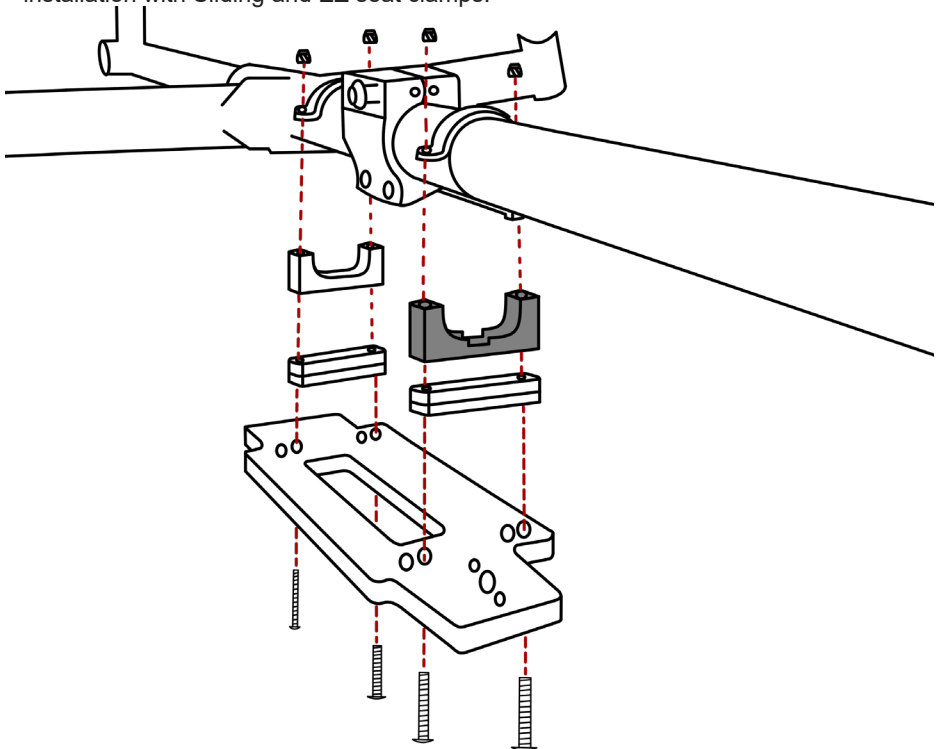
Gran Turismo and Traveler

Note: For single fold Traveler models with Fixed Seat Rail, the battery mount needs to be placed in the furthest forward position to allow proper clearance for the hinge lever to open.



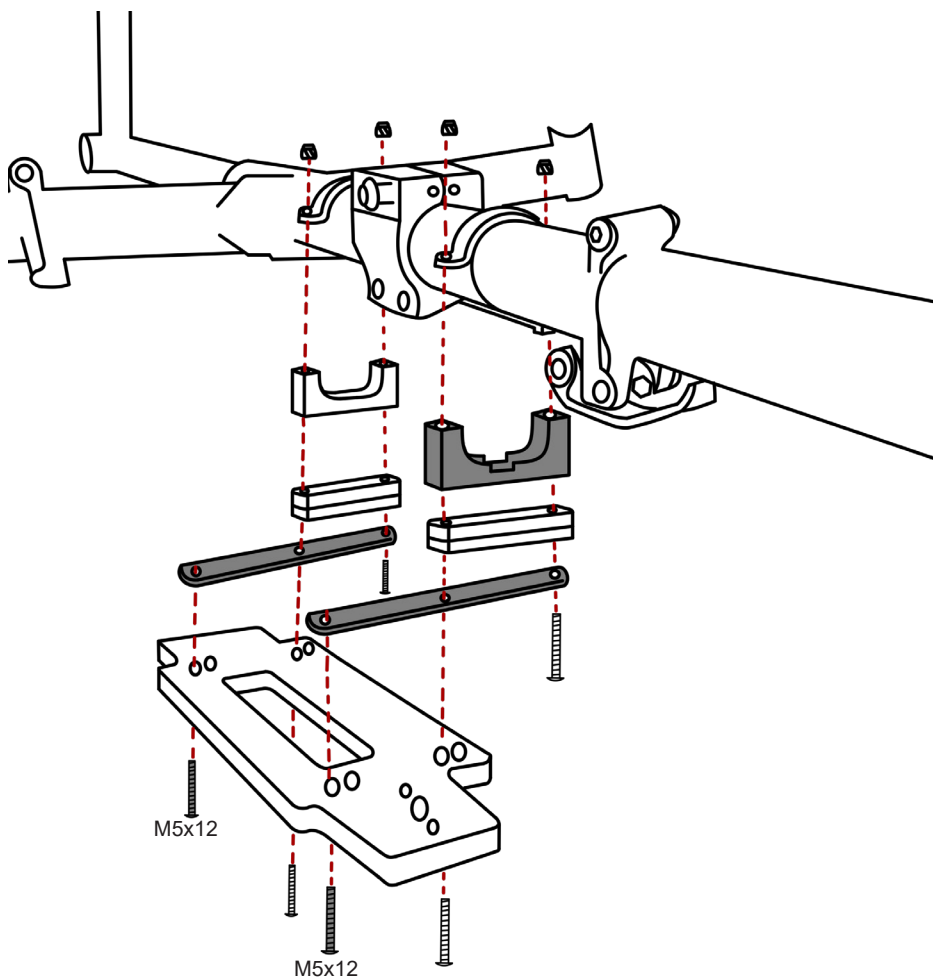
Pre-2017 Rambler models

Note: Rambler Adapter Kit includes notched rear clamp to accommodate installation with Sliding and EZ seat clamps.



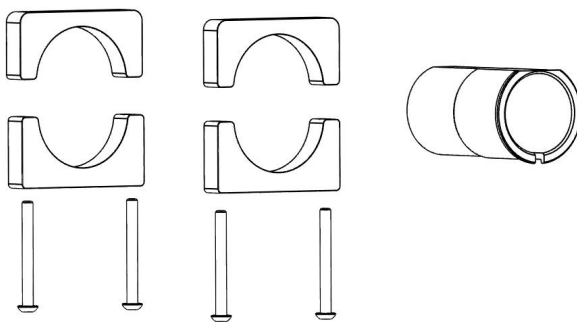
Pre-2019 Traveler models

Note: Traveler Adapter Kit includes notched rear clamp, two offset spacers, and two M5x12 bolts to accommodate installation with Sliding and EZ seat clamps on three fold models.



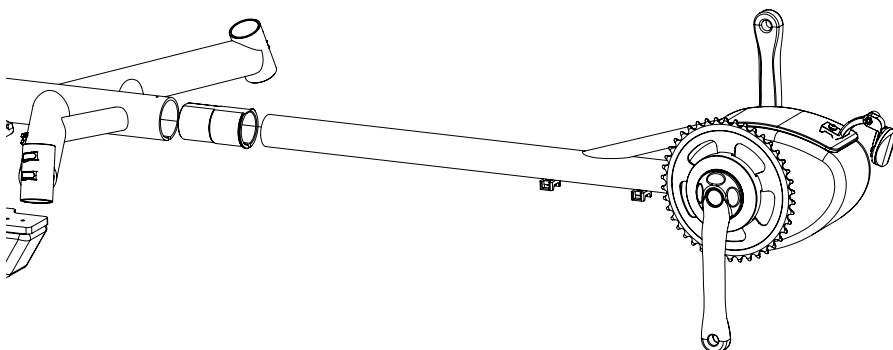
GTS

GTS, Bracket, Upper Battery Mount	TT000895	2
GTS, Bracket, Lower Battery Mount	TT000896	2
Boom, Sleeve, GTS Boost Kit	TT000897	1
M5x50mm BHCS SS	WH000077	4



Replace stock Boom Sleeve with provided Boom Sleeve and insert Bosch equipped boom.

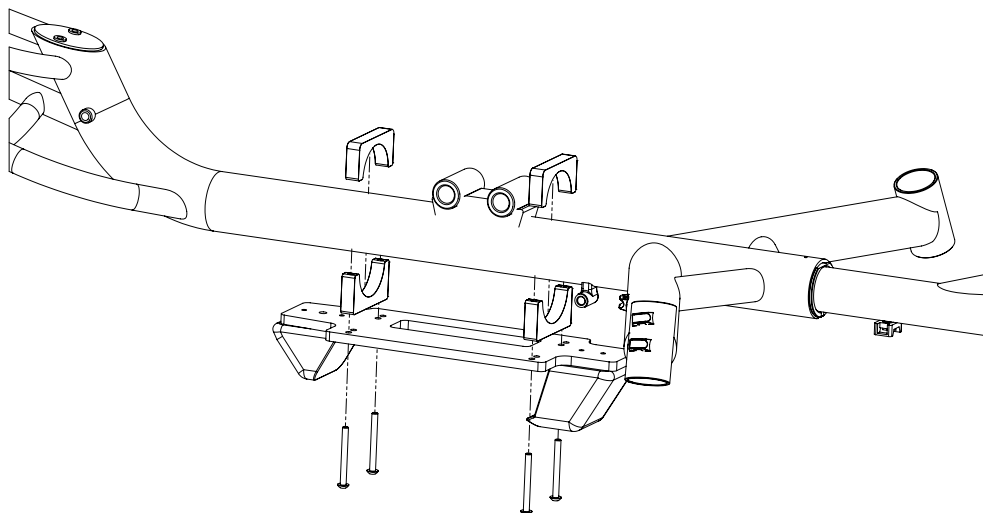
After sliding in the boom, disconnect the tie-rod on one side, being careful not to change the alignment. Make sure the cables are above the tie-rod before securing battery plate to the frame.



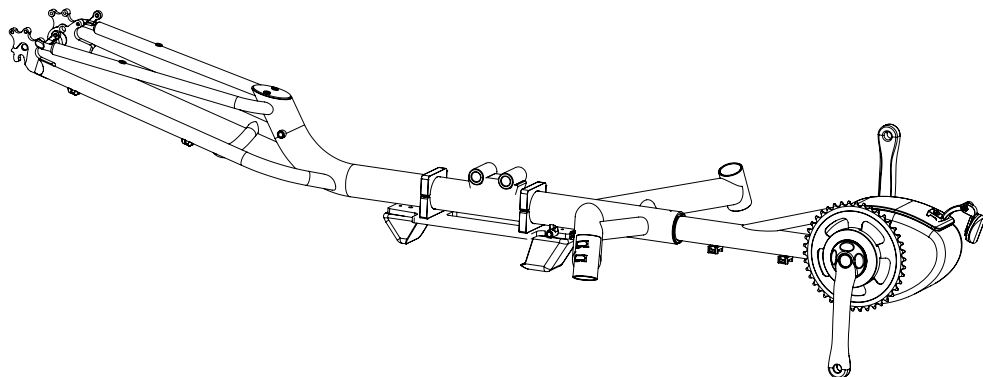
Position clamps on either side of the seat mounts. Make sure the threaded clamp is on top.

Mount the battery plate using provided M5x50 bolts.

Use the mounting position closest to the drive side.

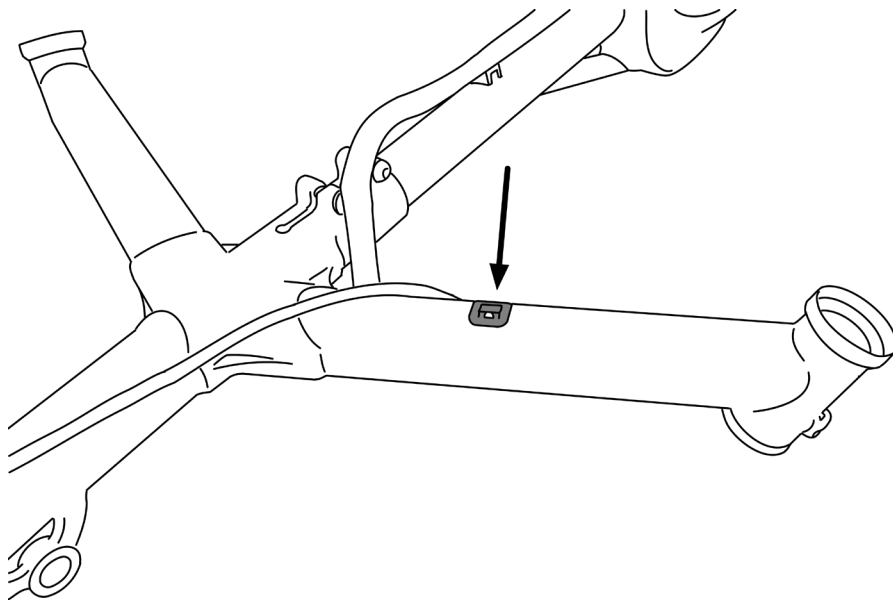


Follow the remaining Boost Kit Installation process for complete assembly and cable routing instructions.



4

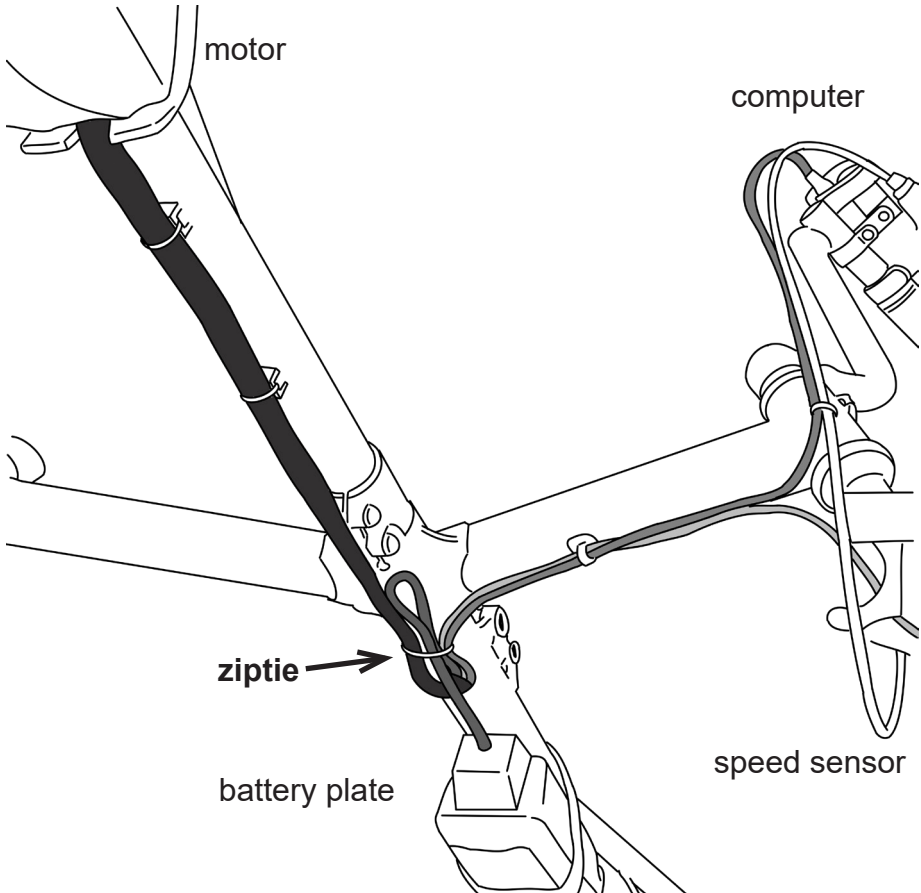
Apply cable guide to bottom side of left outrigger.



5

Route wires according to diagram.

Using the cable housing guide under the center lug of the frame, secure excess wires with ziptie. Do not over tighten ziptie.



NOTE: MODIFICATION OF WIRES WILL VOID WARRANTY.

DO NO CUT AND SPLICE TO SHORTEN WIRES.

6

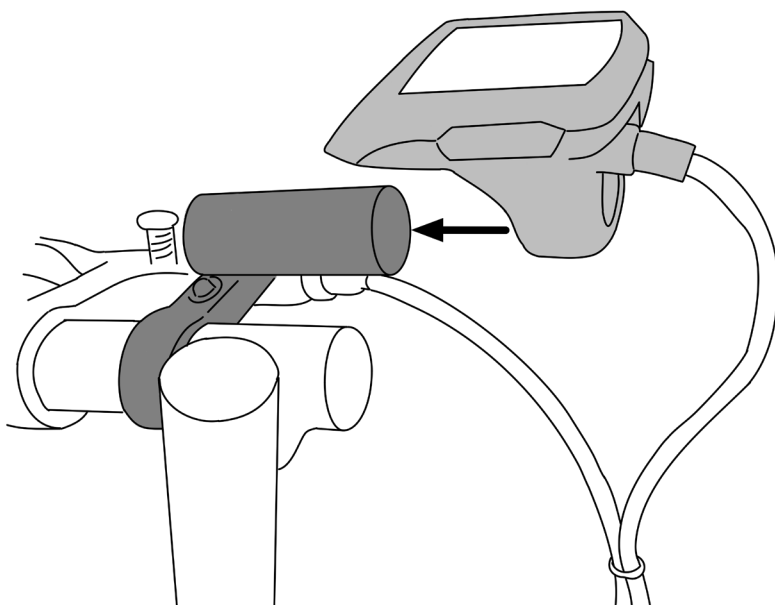
Reconnect tie-rod with the wiring between tie-rod and frame. Refer to diagram on page 8 for wire routing.

7

Reinstall chain and pedals.

8

Assemble display mount.
Attach display mount to left handlebar.
Mount Purion display and secure.



9

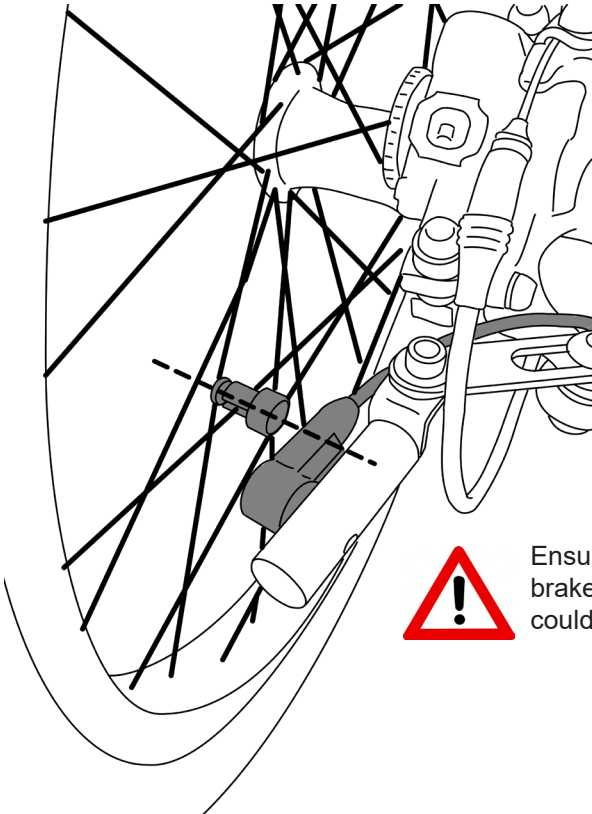
Mount speed sensor on computer sensor bracket.

Refer to page 8 for proper wire routing.

Install magnet on spoke.

Align magnet and marking on speed sensor.

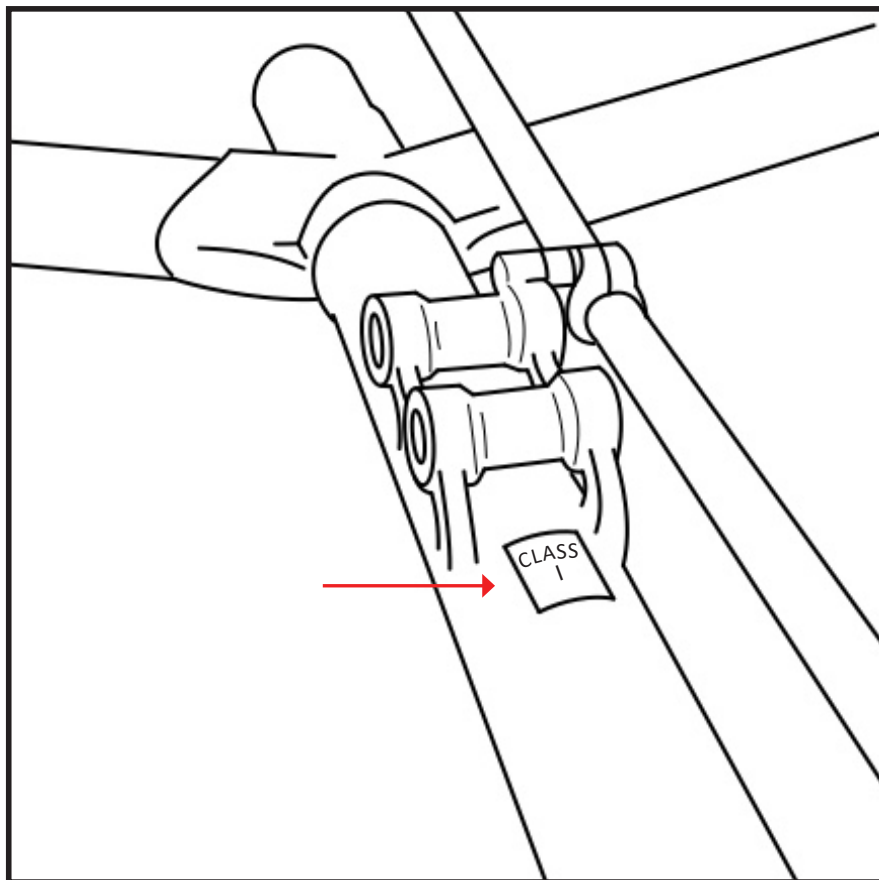
Please note: If your current computer sensor bracket does not have a mounting hole, replace it with the one included in the Boost Kit.



Ensure speed sensor wire is clear of brake rotor and any steering parts that could cause damage.

10

Affix Class I Sticker to mainframe. For models with fixed seat rail, install as shown below. For Rover models, or trikes equipped with Sliding/EZ seats, affix behind seat clamp near chainstays.

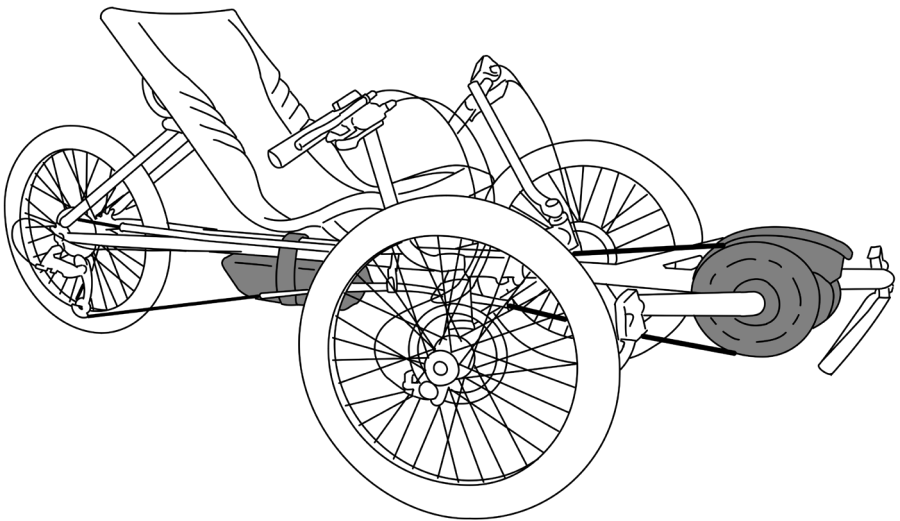


11

Charge the battery pack completely.
Secure battery to frame using included battery strap.

Instructions for charging are located on
TerraTrike's website at: www.terratrike.com/manuals
The battery manual is located under "E.V.O. Bosch"

- Remember to double check your work.
- Test ride the finished product.
- Final step: Watch your customers smile with excitement as they test the intuitive power of the Boost Kit with Bosch Active Line Plus motor.



Item	Part No.
Bosch Boom	TT000761
Battery 400wh	TT000748
Battery Cable	TT000749
Battery Mounting Kit	TT000750
Battery Mounting Kit AFM	TT000778
Battery Top Bracket	TT000771
Cable Management Tube	TT000774
Charger (2A)	TT000751
Charger Power Cord	TT000752
Purion Display	TT000753
Active Line Plus Drive Unit	TT000754
Abus Lock Cylinder	TT000766
Speed Sensor Magnet	TT000755
P65 Motor Cover	TT000847
Motor Mounting Kit	TT000757
Speed Sensor Cable	TT000758
Cable Guide	TT000769
Bosch Crankset	TT000767
Display Mount	TT600405
Battery 440wh EU	WC000044
Charger Power Cable EU	WC000045
Drive unit ALP EU	WC000046



4460 40th St SE Grand Rapids, MI 49512
www.TerraTrike.com | 800.945.9910

