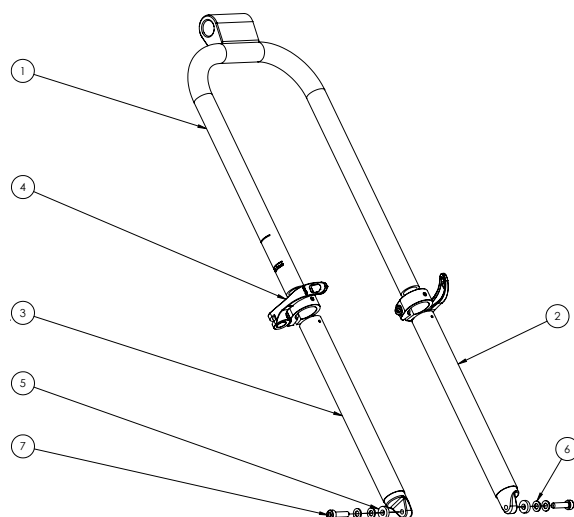
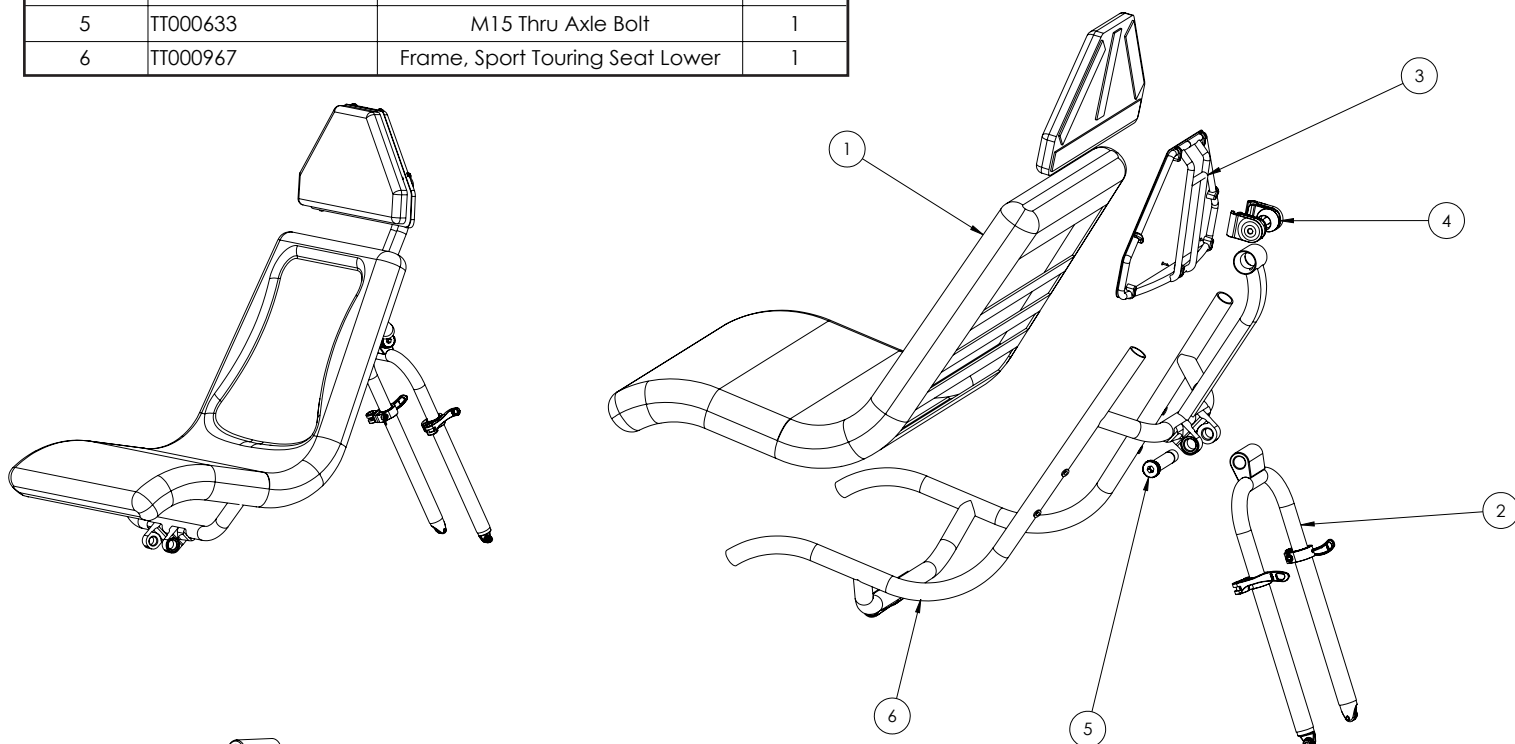


# TerraTrike® Sport Touring Seat Upgrade Kit (TT600925)

Tools Needed: 2mm, 4mm, 8mm Hex Wrenches

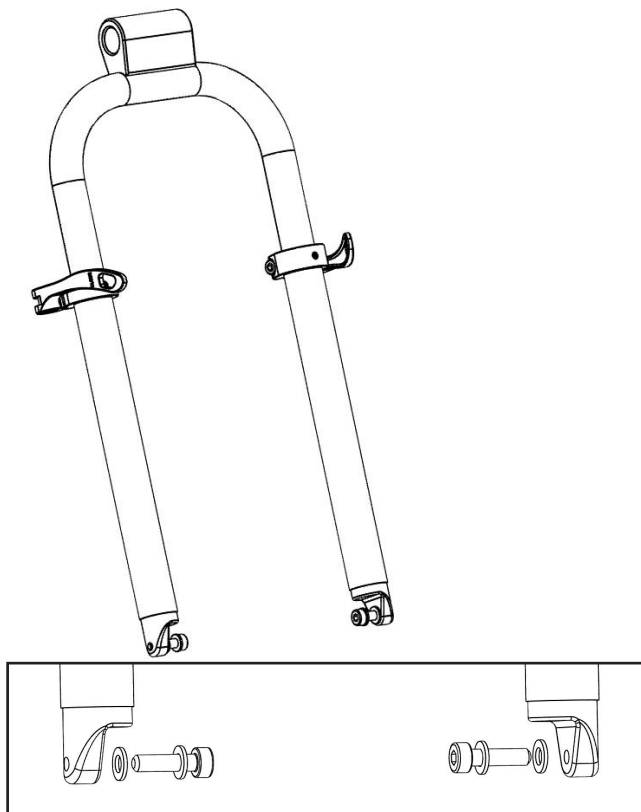
ITEM NO.	PART NUMBER	DESCRIPTION	QTY.
1	TT001002	Seat Mesh, Sport Touring, Blank	1
2	TT600926	Stay, Sport Touring Seat	1
3	TT600939	Seat, Upper, Sport Touring	1
4	TT600931	Seat, Sport Touring Bracket	1
5	TT000633	M15 Thru Axle Bolt	1
6	TT000967	Frame, Sport Touring Seat Lower	1



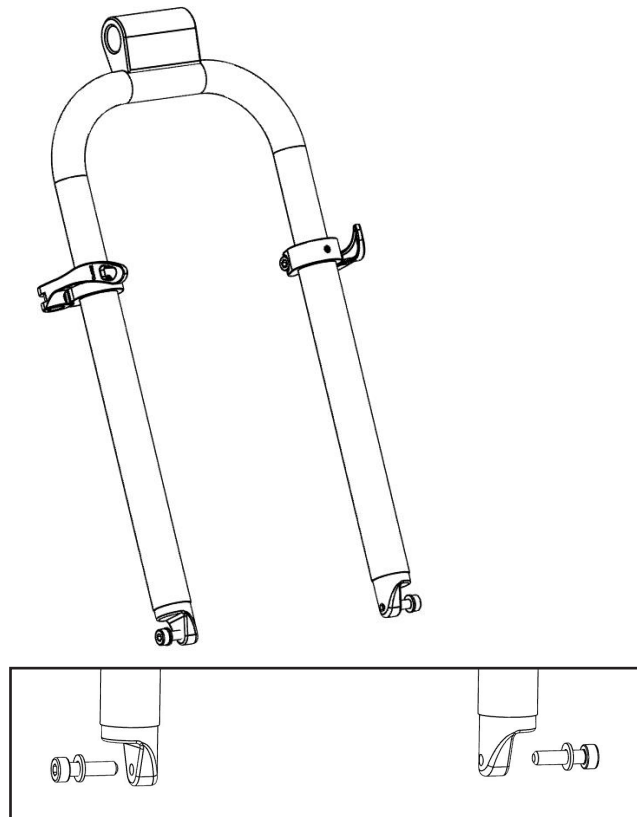
ITEM NO.	PART NUMBER	DESCRIPTION	QTY.
1	TT001019	SEAT STAY, SPORT TOURING UPPER	1
2	TT001021	Stay, Lower Right, Sport Touring Seat	1
3	TT001020	Stay, Lower Left, Sport Touring Seat	1
4	TT600929	Seat Stay Collor	2
5	WC000074	Spacer, 5.2mmIDx12mmODx3mmT	2
6	WH000080	M5 Flat Washer SS, 10mm OD	4
7	WH000042	M5x20mm SHCS SS (TT000301)	2

- 1 Remove the stock seat and lower seat stays from trike. Set hardware aside.
- 2 Using the stock Fixed Seat Bolt, mount the Sport Touring Seat to the mainframe. Refer to the parts diagrams below when installing Lower Seat Stays. Please note: The orientation of the stays, clamps, and hardware vary by model.

Lower Seat Stay assembly for All Terrain, Charge, Rambler, Rambler EVO and Traveler models.



Lower Seat Stay assembly for Gran Turismo and EVO models.



Lower Seat Stay assembly for Maverick and Rogue models. Note these models use the included 3mm spacers (WC000074).

